

BAY COUNTY

VICINITY MAP

# DEPARTMENT OF WATER AND SEWER BAY COUNTY, MICHIGAN

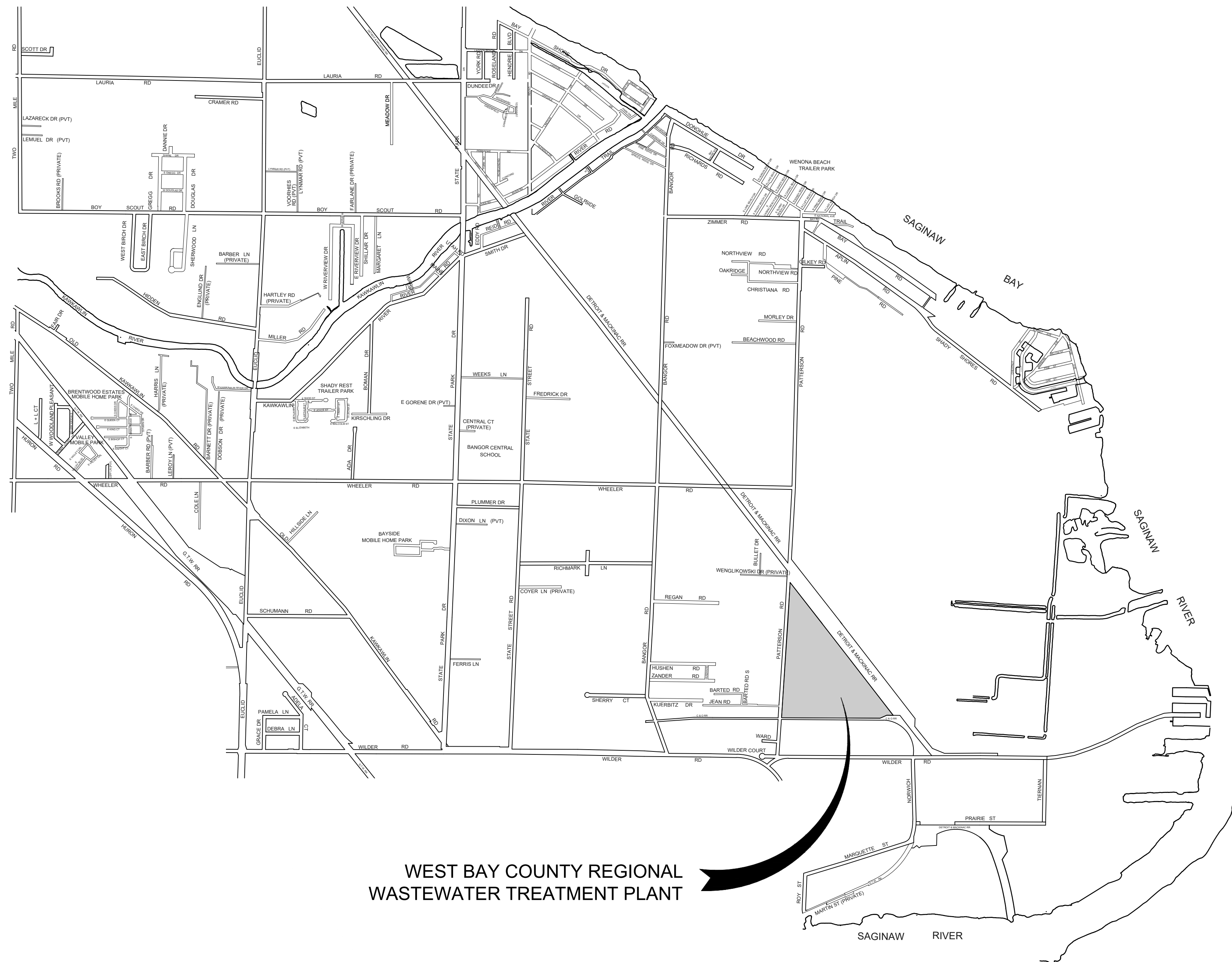
## WEST BAY COUNTY REGIONAL WASTEWATER TREATMENT PLANT

### PHASE II RAW SEWAGE PUMP REPLACEMENT SEPTEMBER 2019



2960 Lucerne Drive SE  
Grand Rapids, MI 49546  
P: 616.977.1000  
F: 616.977.1005

WEST BAY COUNTY REGIONAL WWTP  
PHASE II RAW SEWAGE PUMP REPLACEMENT



WEST BAY COUNTY REGIONAL  
WASTEWATER TREATMENT PLANT

LOCATION MAP

**INDEX OF DRAWINGS**

DESCRIPTION	SHEET NO.
COVER SHEET	CS
RAW SEWAGE PLAN	D1
RAW SEWAGE SECTIONS	D2
RAW SEWAGE PLAN	P1
RAW SEWAGE SECTIONS	P2



Know what's below.  
Call before you dig.

SEPTEMBER 2019  
FAV PROJECT NO.  
837630



M:\Proj\837001-8390000837630\_Bay Co WWTP Raw Sewage Pumps\CAUF\Phase II - Pump Replacement\837630\_CS-2.dwg, 9/23/2019 2:30:03 PM, davef, DWG to PDF.pc3



REVISION:

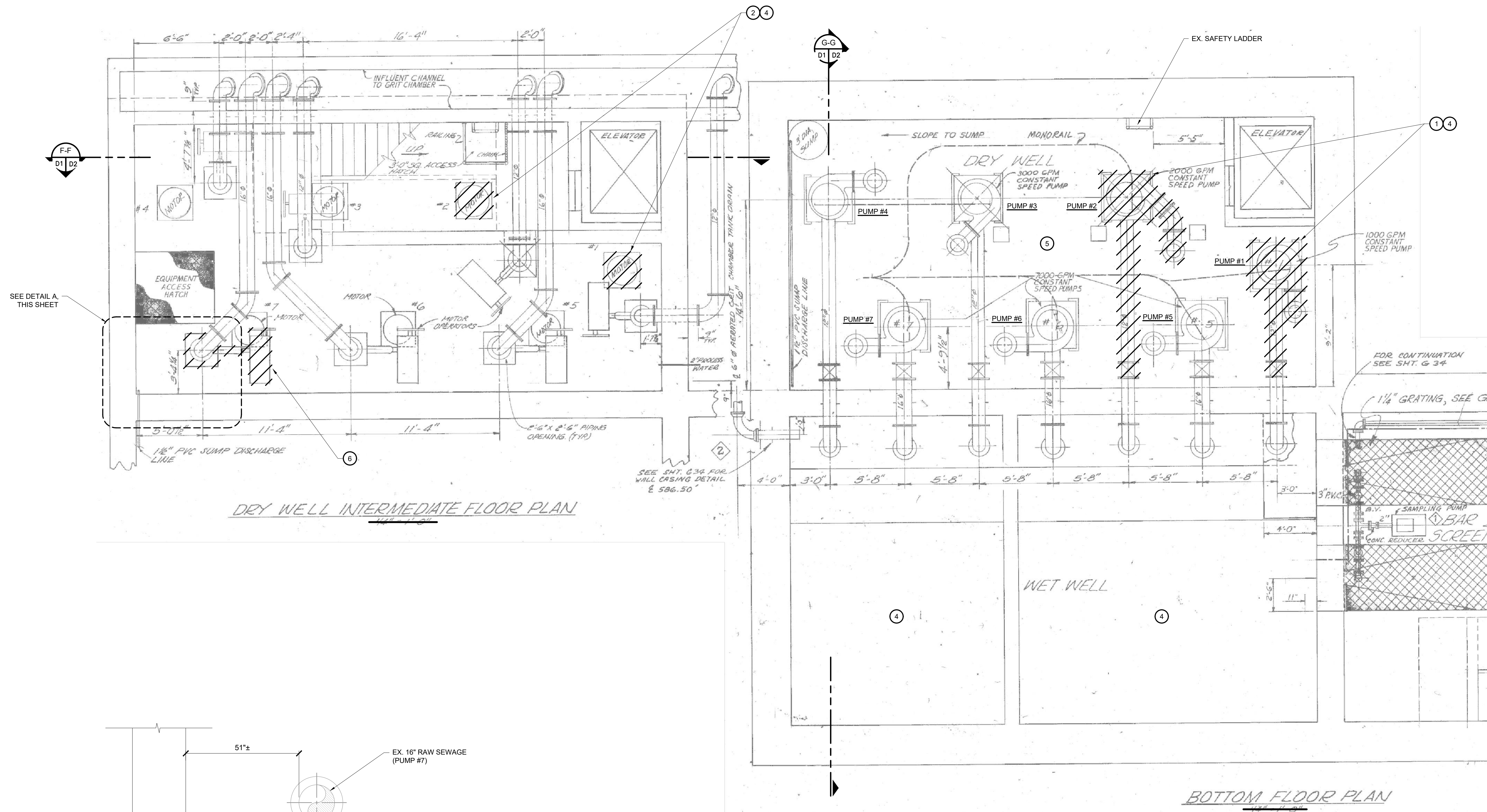
WEST BAY COUNTY REGIONAL WWTP  
BAY COUNTY, MI  
PHASE II RAW SEWAGE PUMP REPLACEMENT  
RAW SEWAGE PLAN

DESIGN TEAM:  
DCT, BWL  
CHECK BY:  
JKP SEPT. 2019  
DRAWING INFORMATION:  
837630\_D1-2  
dewt

SEPTEMBER 2019

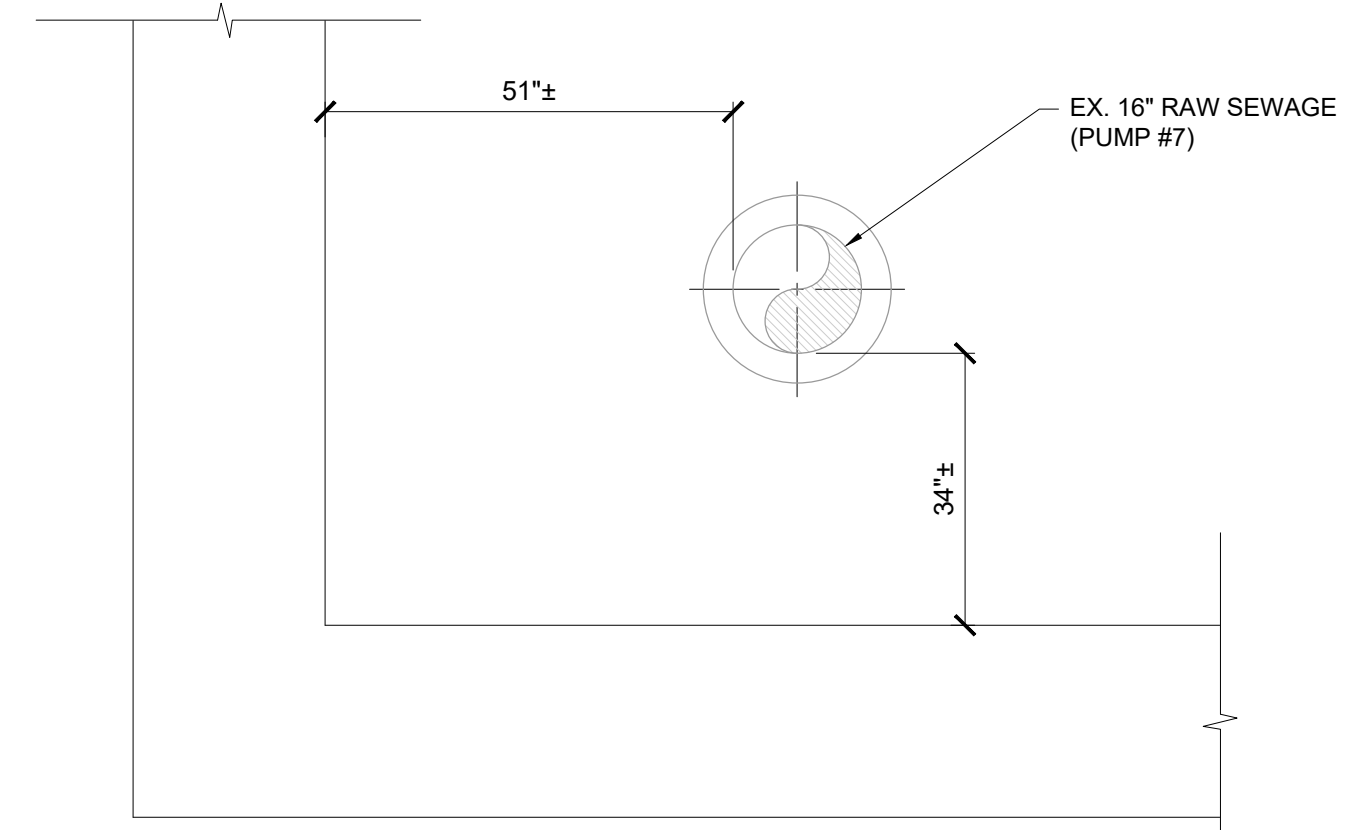
F&V PROJECT NO.  
837630

**D1**



DRY WELL INTERMEDIATE FLOOR PLAN

BOTTOM FLOOR PLAN



**DETAIL**  
PUMP #7 DISCHARGE PIPING  
SCALE: 1/2"=1'-0"  
A  
D1 D1

**NOTE:**  
1. CONTRACTOR RESPONSIBLE FOR FIELD VERIFYING ACTUAL DIMENSIONS.

**DEMOLITION NOTES:**

- ① DEMOLISH RAW SEWAGE PUMPS #1 AND #2 INCLUDING WET WELL ISOLATION VALVE, SUCTION PIPING AND DISCHARGE PIPING TO GATE VALVE. REMOVE MOTORIZED DISCHARGE ISOLATION VALVES
- ② DEMOLISH MOTORS AND SHAFTS FOR RAW SEWAGE PUMPS #1 AND #2.
- ③ REPLACE DISCHARGE CHECK VALVES ON RAW SEWAGE PUMPS #3 AND #4.
- ④ OWNER WILL PERFORM ELECTRICAL WORK AND WET WELL DEWATERING.
- ⑤ SEE SUMMARY OF WORK IN SPECIFICATIONS FOR CONSTRUCTION SEQUENCING.
- ⑥ REMOVE PUMP #7 DISCHARGE ISOLATION VALVE AND ASSOCIATED PIPING TO ACCOMMODATE PROPOSED FITTINGS AND VALVES.

THIS FACILITY DRAWING FOR BACKGROUNDS AND DEMO, TAKEN FROM BAY COUNTY WEST SIDE REGIONAL WASTEWATER TREATMENT PLANT. ENGINEERS: WADE, TRIM & ASSOCIATES. DATED 1977.

M:\Proj\837001-8390000\837630\_Bay Co WWTP Raw Sewage Pumps\Case\Phase II - Pump Replacement\837630\_D1-2.dwg, 9/23/2019 9:45:45 PM, dclwt, DWG to PDF, pcd



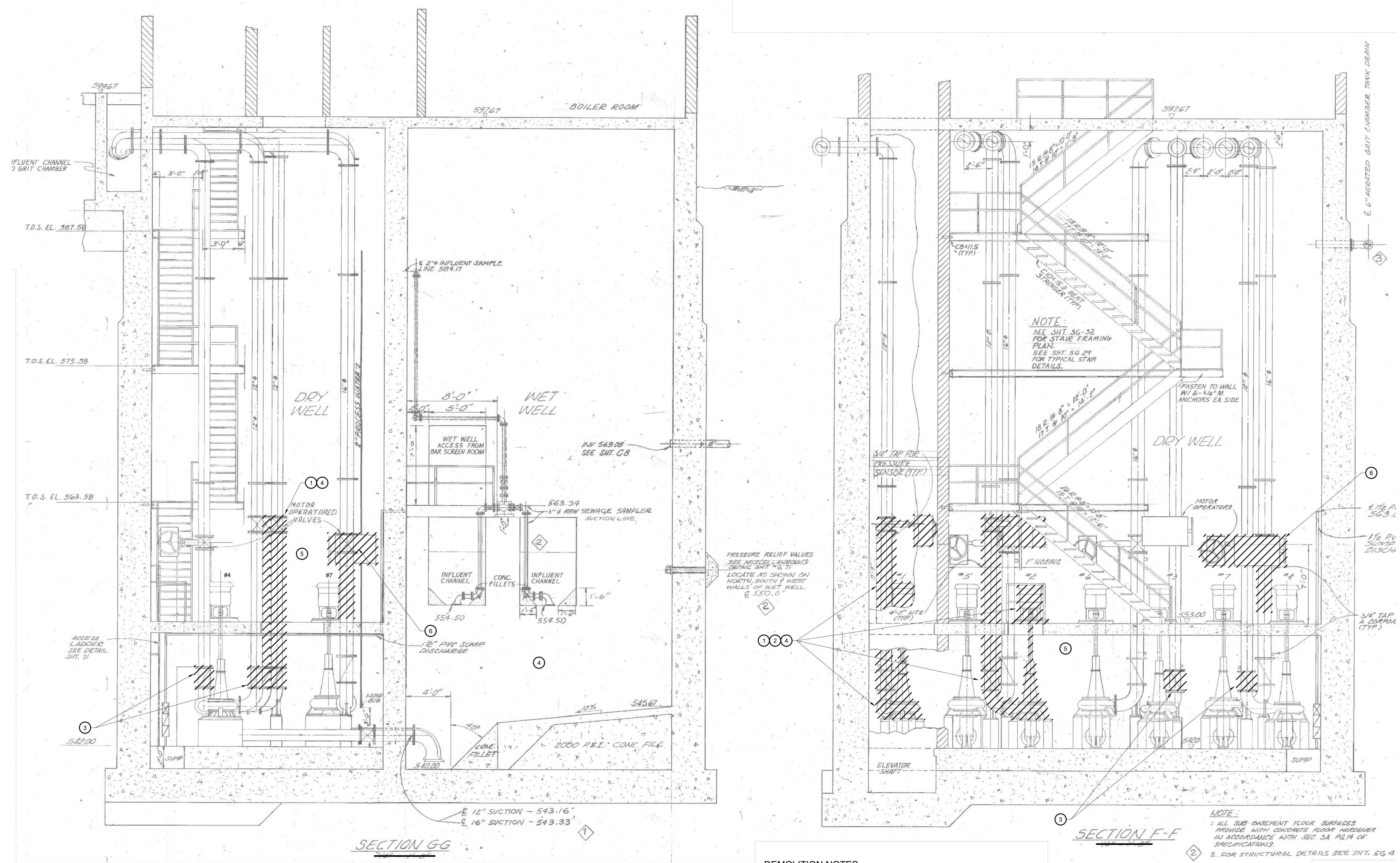
REVISION:

**WEST BAY COUNTY REGIONAL WWTP  
BAY COUNTY, MI  
PHASE II RAW SEWAGE PUMP REPLACEMENT  
RAW SEWAGE SECTIONS**

DESIGN TEAM:  
DCT, BVL  
CHECK BY:  
JKP, SEPT. 2019  
DRAWING INFORMATION:  
837630\_D2-2  
dwg

SEPTEMBER 2019  
REV PROJECT NO.  
837630

**D2**



- DEMOLITION NOTES:**
- 1 DEMOLISH RAW SEWAGE PUMPS #1 AND #2 INCLUDING WET WELL ISOLATION VALVE, SUCTION PIPING AND DISCHARGE PIPING TO GATE VALVE. REMOVE MOTORIZED DISCHARGE ISOLATION VALVES
  - 2 DEMOLISH MOTORS AND SHAFTS FOR RAW SEWAGE PUMPS #1 AND #2.
  - 3 REPLACE DISCHARGE CHECK VALVES ON RAW SEWAGE PUMPS #3 AND #4.
  - 4 OWNER WILL PERFORM ELECTRICAL WORK AND WET WELL DEWATERING.
  - 5 SEE SUMMARY OF WORK IN SPECIFICATIONS FOR CONSTRUCTION SEQUENCING.
  - 6 REMOVE PUMP #7 DISCHARGE ISOLATION VALVE AND ASSOCIATED PIPING TO ACCOMMODATE PROPOSED FITTINGS AND VALVES.

THIS FACILITY DRAWING FOR BACKGROUNDS AND DEMO, TAKEN FROM BAY COUNTY WEST SIDE REGIONAL WASTEWATER TREATMENT PLANT. ENGINEERS: WADE, TRIM & ASSOCIATES. DATED 1977.

M:\Proj\837630-839000\837630\_Bay Co WWTP Raw Sewage Pump\Raw Sewage Pump\Phase II - Pump Replacement\837630\_D2-2.dwg, 9/23/2019 9:48:21 PM, dvel, Blumberg PDF, pcd



REVISION:

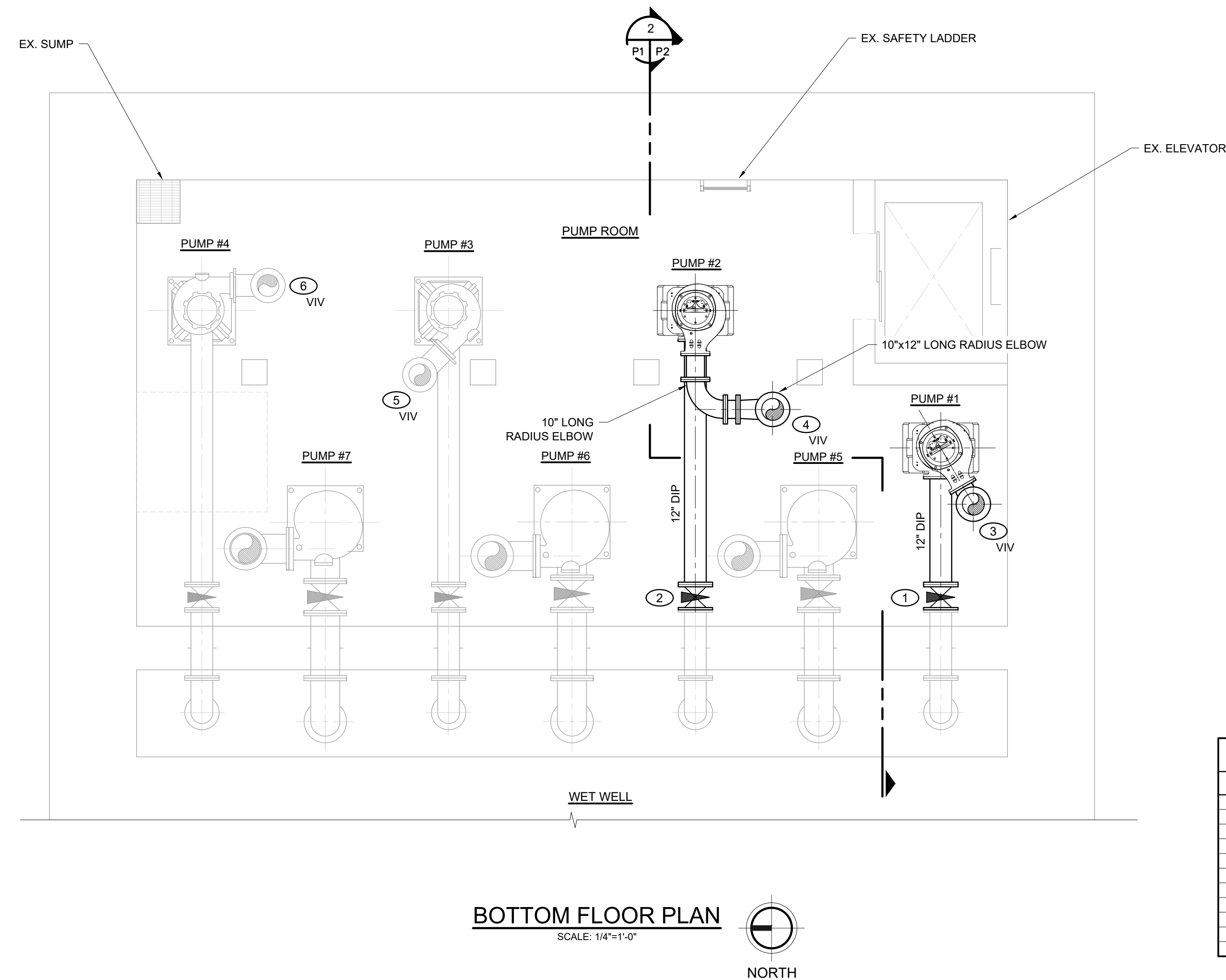
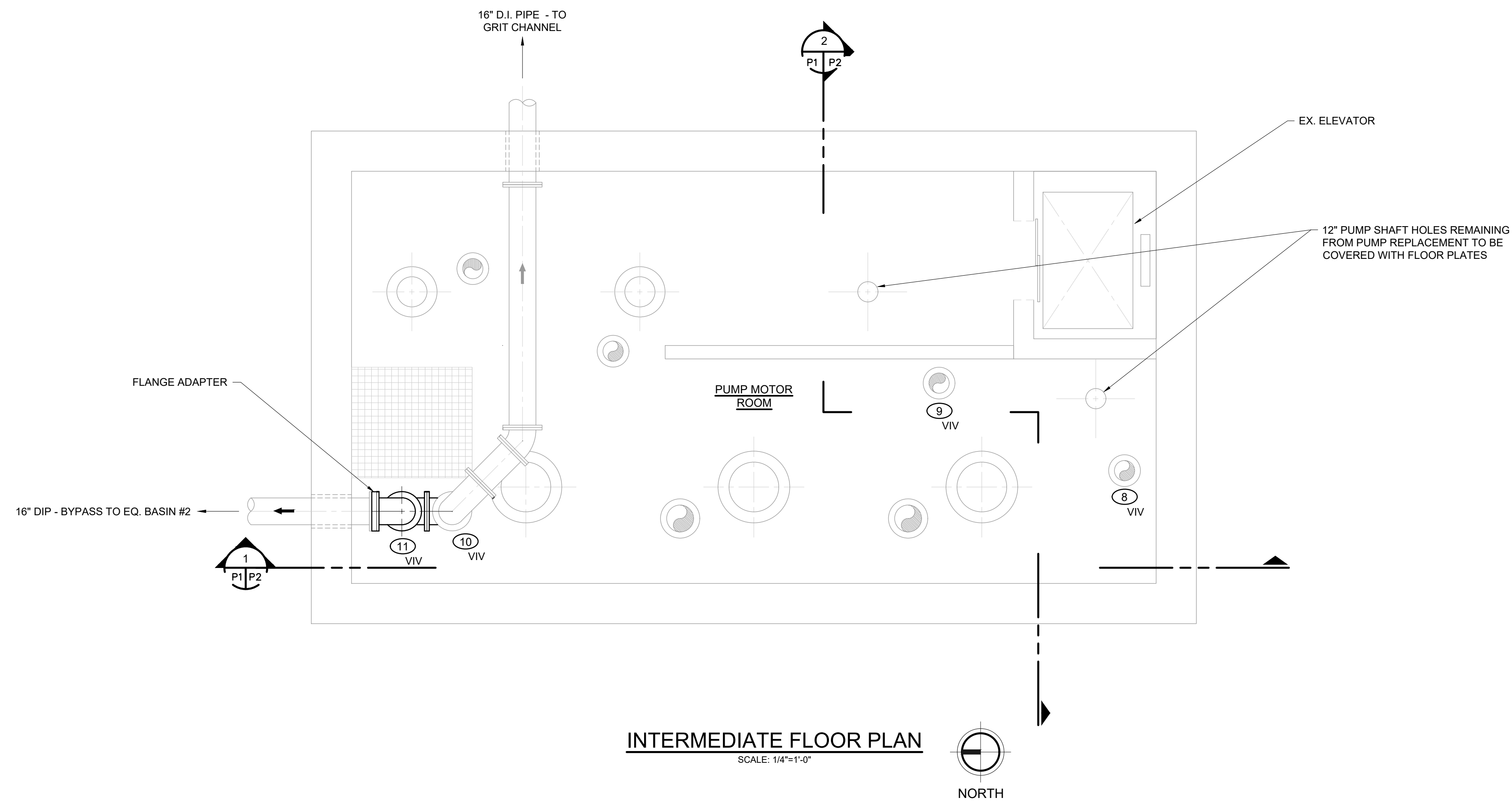
**WEST BAY COUNTY REGIONAL WWTP  
BAY COUNTY, MI  
PHASE II RAW SEWAGE PUMP REPLACEMENT  
RAW SEWAGE PLAN**

DESIGN TEAM:  
BRS, AMS, DCT  
CHECK BY:  
JKP SEPT. 2019  
DRAWING INFORMATION:  
837630\_P1-2  
dewt

SEPTEMBER 2019

F&V PROJECT NO.  
837630

**P1**

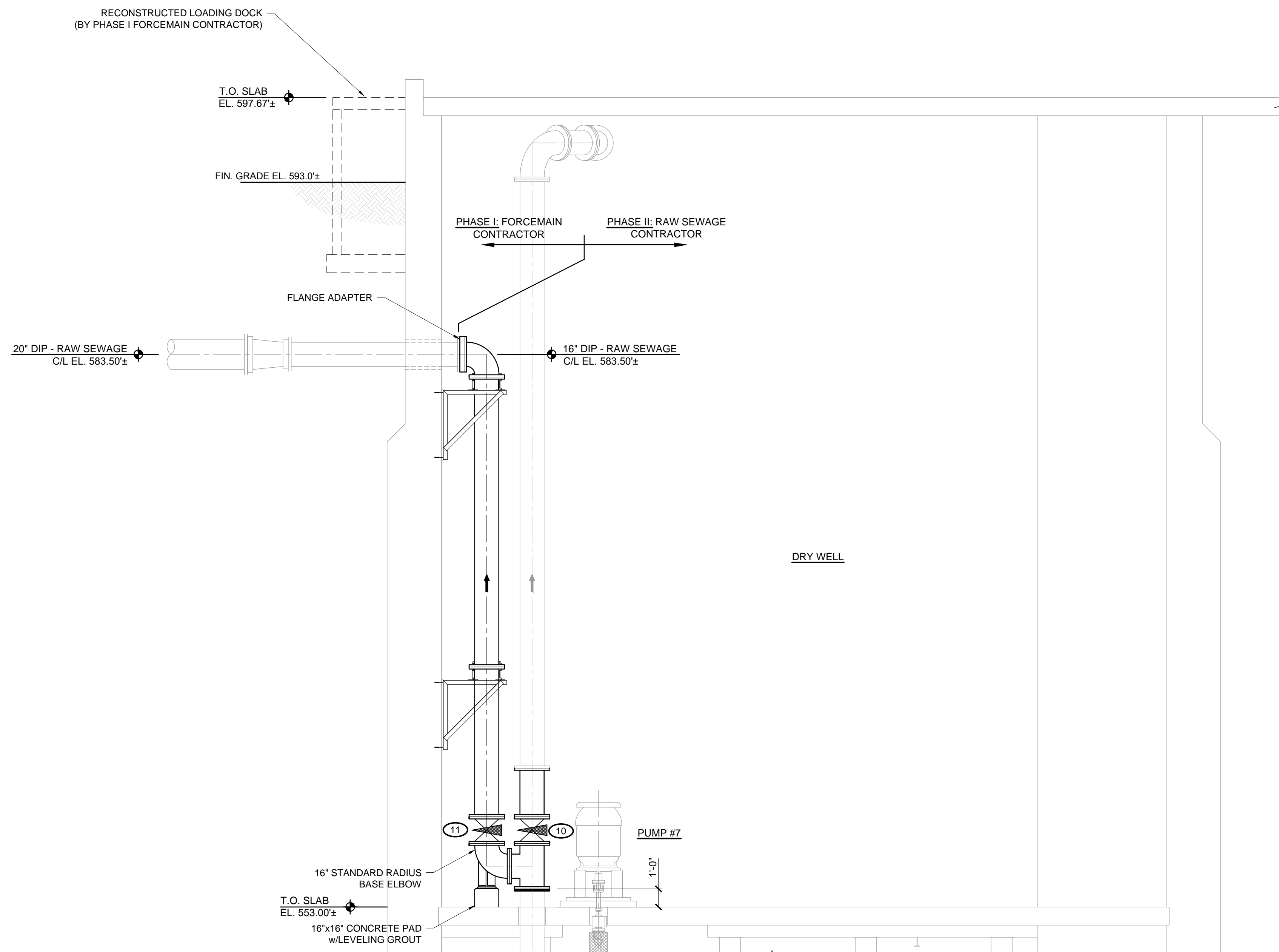


**GENERAL NOTES:**

1. NOT ALL STRUCTURES, PIPING AND PUMP MOTORS ARE SHOWN, INCLUDING STAIRWAY.
2. LOCATE PUMP #1 AS NEEDED TO CONNECT DISCHARGE ELBOW.
3. LOCATE PUMP #2 DIRECTLY UNDER HOLE IN FLOOR ABOVE.
4. PUMP #1 & #2 MOUNTING BASE NEEDS TO BE APPROXIMATELY 2 INCHES SHORTER THAN STANDARD IN ORDER FOR SUCTION ELBOW TO MATE WITH SUCTION PIPE. INSTALL PUMP WITHOUT MAINTENANCE PAD.
5. OWNER WILL PERFORM ELECTRICAL WORK.
6. OWNER WILL DEWATER WET WELL FOR VALVE REPLACEMENT.

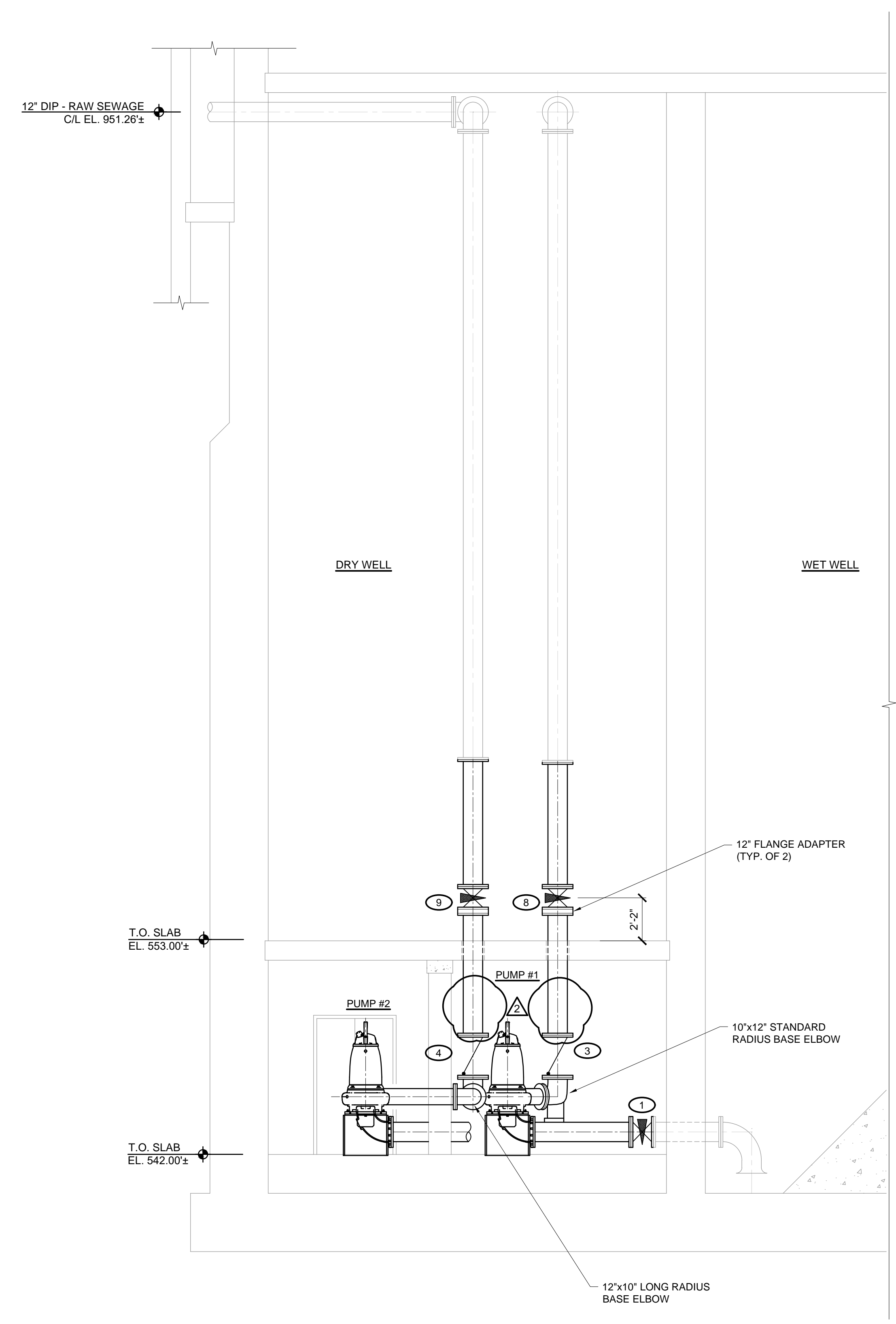
**VALVE SCHEDULE (3" & LARGER)**

TAG	SIZE	TYPE	ACTUATOR	COMMENTS	LOCATION
1	12"	PLUG	HANDWHEEL		PUMP 1 SUCTION
2	12"	PLUG	HANDWHEEL		PUMP 2 SUCTION
3	12"	CHECK	-		PUMP 1 DISCHARGE
4	12"	CHECK	-		PUMP 2 DISCHARGE
5	12"	CHECK	-		PUMP 3 DISCHARGE
6	12"	CHECK	-		PUMP 4 DISCHARGE
7				NOT USED	
8	12"	PLUG	HANDWHEEL		PUMP 1 DISCHARGE
9	12"	PLUG	HANDWHEEL		PUMP 2 DISCHARGE
10	16"	PLUG	ELECTRIC		PUMP 7 TO GRIT CHANNELS
11	16"	PLUG	ELECTRIC		PUMP 7 TO EQ. BASIN



**SECTION 1**  
 DRY WELL LOOKING EAST  
 SCALE: 1/4"=1'-0"

**GENERAL NOTES:**  
 1. MOST PUMPS NOT SHOWN FOR CLARITY.  
 2. PHASE I FORCEMAIN CONTRACTOR TO EXTEND 16" PIPING 12" INTO DRY WELL.  
 PHASE II CONTRACTOR TO FIELD VERIFY ELEVATION.



**SECTION 2**  
 DRY/WET WELL LOOKING SOUTH  
 SCALE: 1/4"=1'-0"